

# DYMAXRAIL

INNOVATIVE RAILWAY MACHINES AND RAILCARTS





# DYMAX RAIL

## RAIL RIDER CDX SERIES

HI-RAIL MACHINES



BIG JOBS. NO PROBLEM. **CDX180**





## CDX180 FEATURES AND SPECIFICATIONS

### CDX180 POWER CAR + DOLLY

- 360,000 lb capacity on rail with dolly
- 100HP hydrostatic rail drives with air brake systems
- Two speed drives - 4/7 mph
- Manual control with single manstand
- HD Axles and Bearings for long service life
- Lights and horns

### OPTIONS

- Cab
- Remote control
- Gondola attachment cart
- Custom designs solutions

MODELS	
Model	CDX180
HP	100
Wheel Size (diam)	18in
Speed Max (mph)	4/7
GVW (lbs)	360,000
Power Car Weight (lbs)	16,500
Dolly Weight (lbs)	7,500

**Specifications subject to change without notice.**

**Contact DymaxRail**

**180T CAPACITY  
MOVE BIG MACHINERY & MATERIALS  
HANDCRAFTED PERFORMANCE**



**DYMAXRAIL**  
402 Miller Drive  
Wamego, KS 66547 USA

**Toll Free: 800.530.5407 (USA/CAN)**  
**Office: +1.785.456.2081**  
**Fax: +1.785.456.8328**

**www.DYMAXRAIL.com**  
**sales@DYMAXRAIL.com**

# DYMAX RAIL

## RAIL RIDER TRX50

HI-RAIL MACHINES



## DYMAXRAILTRAX. 50T CAPACITY

**CRAWL ON AND OFF RAIL IN 3 MINUTES**  
**MOVE EQUIPMENT AND MACHINERY**  
**HIAB CRANE & REMOTE OPTIONS**  
**MOVES ON FEDERAL HIGHWAYS**





### CUSTOMIZED



## TRX50 FEATURES AND SPECIFICATIONS

### TRX50-TANDEM-TRIDEM

- 50T capacity on rail
- Hydrostatic rail drives
- TANDEM or TRIDEM roading axle
- Hydrostatic rail gear with towable hub design
- 75 gallon fuel tank
- Enclosed Cab with AC/Heat
- 40,000 lumens LED lighting package
- Rail and roading lights
- 180HP Tier 4 Diesel Power Plant
- Air Brakes

### OPTIONS

- Remote control
- Cargotec Hiab 15T and 30T cranes
- Custom design solutions
- Poly track pads
- Gauge adaptable

### RAIL RIDER TRX MODELS

Model	TRX50-TANDEM	TRX50-TRIDEM
Engine (HP)	6.7L Cummins / 180	6.7L Cummins / 180
Trailer Details	102 x 48ft	102 x 52ft
Railgear Systems	DymaxRail Gear solutions with integrated hydraulic & electronic systems.	
Weight (lbs)	46,000	49,500

**Contact DymaxRail to make yours today! Specifications subject to change without notice. Contact DymaxRail for more information.**



**DYMAXRAIL**  
402 Miller Drive  
Wamego, KS 66547 USA

Toll Free: 800.530.5407 (USA/CAN)  
Office: +1.785.456.2081  
Fax: +1.785.456.8328

[www.DYMAXRAIL.com](http://www.DYMAXRAIL.com)  
[sales@DYMAXRAIL.com](mailto:sales@DYMAXRAIL.com)

# DYMAX RAIL

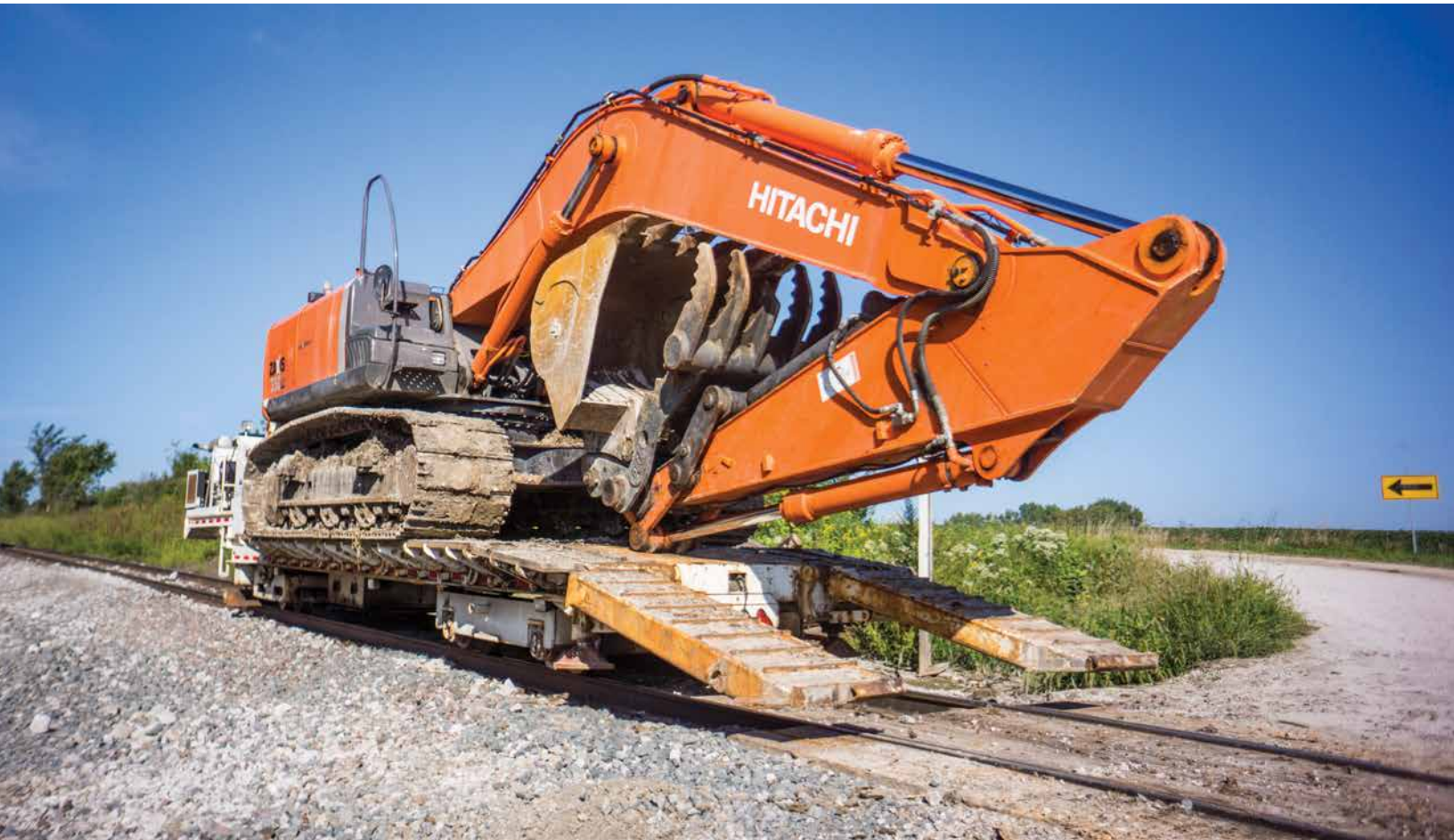
## RAIL RIDER LR SERIES

HI-RAIL MACHINES

# SOLUTIONS FOR MASS TRANSITS



# SOLUTIONS FOR RAILROADS





## LR30 FEATURES AND SPECIFICATIONS

### LR30

- 60,000 lb capacity on rail
- 100HP hydrostatic rail drives with air brake systems
- Speeds up to 15 mph
- 102" wide x 24ft long deck x 44ft overall length with road dolly.
- Manual ramps
- 21in deck height off rail
- 16in HD Dymaxrail heat treated railgear
- Single drive axle

### OPTIONS

- Turntable
- Road Dolly - single axle
- Ballast Hopper
- Remote control
- Gauge adaptable

## LR50 FEATURES AND SPECIFICATIONS

### LR50

- 100,000 lb capacity on rail
- 180HP hydrostatic rail drives with air brake systems
- Speeds up to 17 mph
- 102" wide x 24ft long deck x 44ft overall length with road dolly.
- Hydraulic Ramps
- 28in deck height off rail
- 16in HD Dymaxrail heat treated railgear - Dual drive axle with towable hub

### OPTIONS

- Turntable
- Road Dolly - single axle
- Ballast Hopper
- Remote control
- Gauge adaptable

MODELS		
Model	LR35	LR50
HP	100-129	160-180
Wheel Size (diam)	16in	16in
Speed Max (mph)	15	17
Load Capacity (lbs)	65,000	100,000
Weight with road dolly (lbs)	28,000	34,000

Specifications subject to change without notice. Contact DymaxRail for control group details



**Ballast spreading hopper attachment**



**DYMAXRAIL**  
402 Miller Drive  
Wamego, KS 66547 USA

Toll Free: 800.530.5407 (USA/CAN)  
Office: +1.785.456.2081  
Fax: +1.785.456.8328

[www.DYMAXRAIL.com](http://www.DYMAXRAIL.com)  
[sales@DYMAXRAIL.com](mailto:sales@DYMAXRAIL.com)

# DYMAX RAIL

## RAIL RIDER LB SERIES

HI-RAIL MACHINES



90T CAPACITY. **SUPER CARRIER**





## LB90 FEATURES AND SPECIFICATIONS



- 90T capacity on rail
- Hydrostatic rail drives
- (2x) 75 gallon fuel tanks
- Enclosed cab with AC/Heat
- 40,000 lumens LED lighting package
- Rail and Roading lights
- 180HP Tier 4 Diesel power plant
- Air Brakes

### OPTIONS

- Remote control
- Sensor and IOS solutions

MODEL	
Model	LB90
Trailer Size	102in x 24ft
Deck width	102in standard 126in swingouts Hardwood board
Max capacity (on rail)	90 tons
Wheel size (diam)	20in
Rail axles	8x - bogie with suspension
GVW (lbs)	69,000
Hyd. rail stabilizers	4x
Load jack stabilizers	2x
Specifications subject to change without notice. Contact DymaxRail for more information.	



Spare tool circuits



Remote Control Technology



**DYMAXRAIL**  
402 Miller Drive  
Wamego, KS 66547 USA

Toll Free: 800.530.5407 (USA/CAN)  
Office: +1.785.456.2081  
Fax: +1.785.456.8328

[www.DYMAXRAIL.com](http://www.DYMAXRAIL.com)  
[sales@DYMAXRAIL.com](mailto:sales@DYMAXRAIL.com)



# DYMAX RAIL

## RAIL RIDER TOWRAILER

TOWABLE MACHINE CARTS



**TOWRAILER.** NOT JUST A CART.







MODELS				
Model	TOW6	TOW36	TOW50	TOW90
Trailer size	8ft x 11ft	8ft4in x 24ft	8ft6inx28ft	8ft6inx36ft
Excavator size	6 ton	36 tons	50 tons	90 tons
Wheel size (diam)	16in	16in	20in	20in
Rail axles	2x-fixed	4x - bogie	4x - bogie	4x - bogie
GVW (lbs)	12,000	80,000	100,000	180,000
Hyd. stabilizers	NA	4x	4x	4x
Hyd. rail clamps	NA	2x	2x	2x
Manual rail clamps	2x	NA	NA	NA
Ramps	Manual	Integrated ramp	Dovetail with flip down ramp	Dovetail with flip down ramp
Brakes (Air)	Truck style air	Truck style air or train air		
Hitches	Pintle	Pintle Railcar Coupler	Pintle Railcar Coupler	Pintle Railcar Coupler
Lights / Alarm	Red/White with LED spot lamp			
Specifications subject to change without notice. Contact DymaxRail for more information.				



**DYMAXRAIL**  
402 Miller Drive  
Wamego, KS 66547 USA

**Toll Free: 800.530.5407 (USA/CAN)**  
**Office: +1.785.456.2081**  
**Fax: +1.785.456.8328**

**www.DYMAXRAIL.com**  
**sales@DYMAXRAIL.com**



# DYMAX RAIL

## RAIL RIDER ROADRAILER

HI-RAIL EQUIPMENT



ROAD TO RAIL **IN MINUTES**



### ROADRAILER FEATURES AND SPECIFICATIONS



- Road & Rail Versatility
- Quickly Load to and from Rails
- Stronger Designs made to Last



	Standard	Standard	Side Wing Model	Side Wing Model
Model	DX-RRD-RR-9T	DX-RRD-RR-12T	DX-RRD-RRSW-9T	DX-RRD-RRSW-12T
Trailer Deck	8ft wide x 20ft deck + 5ft dovetail			
Total Length	29ft			
GVW	9 tons	12 tons	9 tons	12 tons
Trailer Wt (Tare)	8,800	9,800	10,660	11,500
Deck Height	33in	33in	33in	33in
Road Brakes - Standard	Electric	Electric	Electric	Electric
Axles / Tires	Leaf Spring - Tandem with (8) ST235 80R16 tires			
Hitch	Adjustable pintle hitch			
Railing Systems	DymaxRail Systems include railgear, red/white on rail lighting package with LED spot lamps, on board hydraulic controls for railgear with safety pins. Includes storage box with pump and battery. Features external dual valves for easy lowering and raising of railgear.			
Options				
Brakes Options	Air for road axles; Air for Railgear			
Suspension Systems	Air lift			
Other	Stake pockets with stakes for handling poles and other materials			
Load securement Tie downs	Ratchet straps			
Machinery Tie downs	D ring machinery tie downs			
Spare Tire	Spare tire with rim			
	Specifications subject to change without notice. Contact DymaxRail for more information.			



**DYMAXRAIL**  
402 Miller Drive  
Wamego, KS 66547 USA

Toll Free: 800.530.5407 (USA/CAN)  
Office: +1.785.456.2081  
Fax: +1.785.456.8328

[www.DYMAXRAIL.com](http://www.DYMAXRAIL.com)  
[sales@DYMAXRAIL.com](mailto:sales@DYMAXRAIL.com)



### OVERVIEW

Dymax Rail Carts, often called rail transfer carts, rail push carts or rail material carts, are ideal for manufacturing facilities and railway networks. Designed for low speed applications, Dymax Rail Carts are not intended for use in high speed applications.

These rail transfer carts are used for moving large loads of equipment or specialized machinery on rail at slow speeds.

All models are provided with a standard mechanical parking brake, sealed bearings, and heavy duty wheels and axles.

Want to haul more? Custom designs are available, and we build to order.



### SPECIFICATIONS

### CUSTOM DESIGNS AVAILABLE

Model #	Description	Hitch Type	Brake Type	Wheel Diameter	Deck Type	Weight lb	Weight kg
DX-RT-7x12x60T-RR	Low Profile Cart 60 TON CAPACITY	Pin	Manual Park	16in / 410mm	Steel Decking	10,000	4,536
DX-RT-7x16x60T-RR						11,000	4,989
DX-RT-7x20x60T-RR						12,000	5,443

*STANDARD - Outside mounted bearings and 16" rail wheels. Manual park brake and pin type hitch*

*OPTIONAL - Tie down locations, deck plate thickness, hitches, towbars, sizes.*



**DYMAXRAIL**  
402 Miller Drive  
Wamego, KS 66547 USA

**Toll Free: 800.530.5407 (USA/CAN)**  
**Office: +1.785.456.2081**  
**Fax: +1.785.456.8328**

**www.DYMAXRAIL.com**  
**sales@DYMAXRAIL.com**



# RAIL CARTS

## RAIL TRANSFER CARTS / PUSH CARTS

### OVERVIEW

Dymax Rail offers trailers suited for use with Road Rail Machinery such as Grapple Trucks and Excavators. These trailers are 8' x 16' size and feature numerous options such as park or air brake kit, solar powered direction detection lighting, tie down locations, stake pockets or panel walls.



Optional gondola side walls



### SPECIFICATIONS

### CUSTOM DESIGNS AVAILABLE

Model #	Description	Hitch Type	Brake Type	Wheel Diameter	Deck Type	Weight lb	Weight kg
DX-RT-8x20x20T-RR	Rail Trailer - 20 TON CAPACITY	Pintle Hitch	Air with Glad Hands Connectors	16in / 410mm	Steel Decking	4,900	2,222
DX-RT-8x20x30T-RR	Rail Trailer - 30 TON CAPACITY					6,000	2,721
DX-RT-8x20x40T-RR	Rail Trailer - 40 TON CAPACITY					7,500	3,402
DX-RT-8x20x50T-RR	Rail Trailer - 50 TON CAPACITY					9,000	4,082
DX-RT-8x20x60T-RR	Rail Trailer - 60 TON CAPACITY					10,800	4,898

*STANDARD - Air brakes, 4ft towbar, steel decking, D ring tie downs*

*OPTIONAL - Gondola box top, upright tie retention stakes, sprayed liner coating. Red/White and LED spot lighting.*



**DYMAXRAIL**  
402 Miller Drive  
Wamego, KS 66547 USA

**Toll Free: 800.530.5407 (USA/CAN)**  
**Office: +1.785.456.2081**  
**Fax: +1.785.456.8328**

**www.DYMAXRAIL.com**  
**sales@DYMAXRAIL.com**





**DYMAX  
RAIL**

**WWW.DYMAXRAIL.COM**

**402 MILLER DRIVE | PO BOX 297 | WAMEGO, KS | 66547 | USA  
US: 1-800-530-5407 | WORLDWIDE: 1-785-456-2081**